

Performance in Command & Control

Preliminary Results from a Scoping Review

Patrick Drews, MPA – presentation at IDSF 2023 – 20th september 2023 – Vienna, Austria



about Patrick

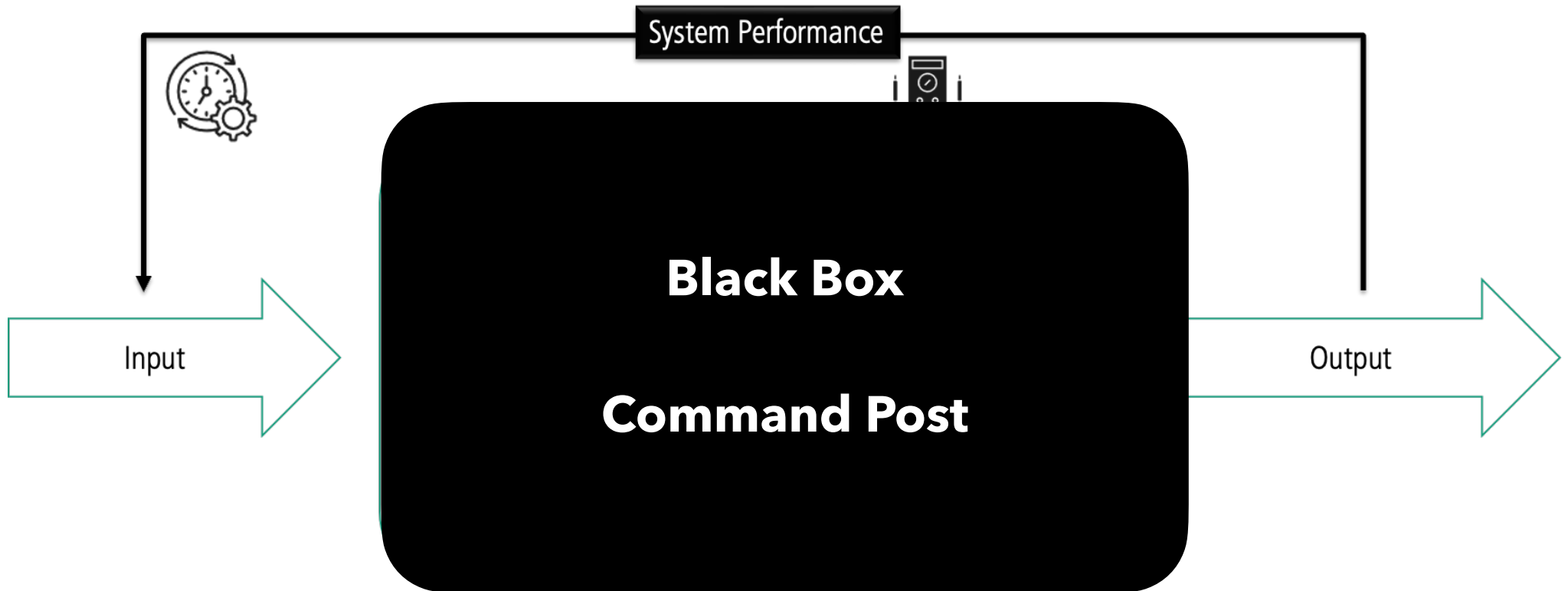
- Deputy head federal & state projects at accellonet, Neu-Ulm, Germany
- PhD student at University of Wuppertal
- 20+ years of experience in emergency management

patrick.drews@uni-wuppertal.de





Input-Output-Model



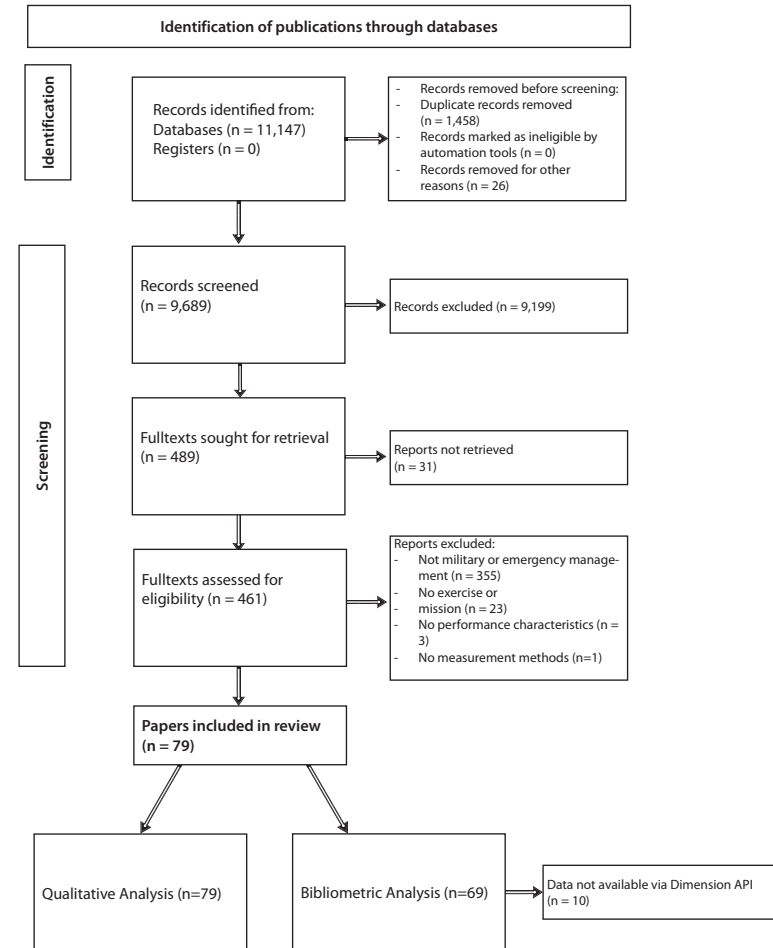


Method

Scoping review

- DB search in Scopus, Web of Science, PubMed, TIBKAT, CORDIS
- 11,147 initial records
- 9,689 records after duplicate removal
- 489 eligible full-texts after abstract screening
- 79 paper included in the review process
- Bibliometric & Qualitative Content Analysis

PRISMA 2020 flow diagram

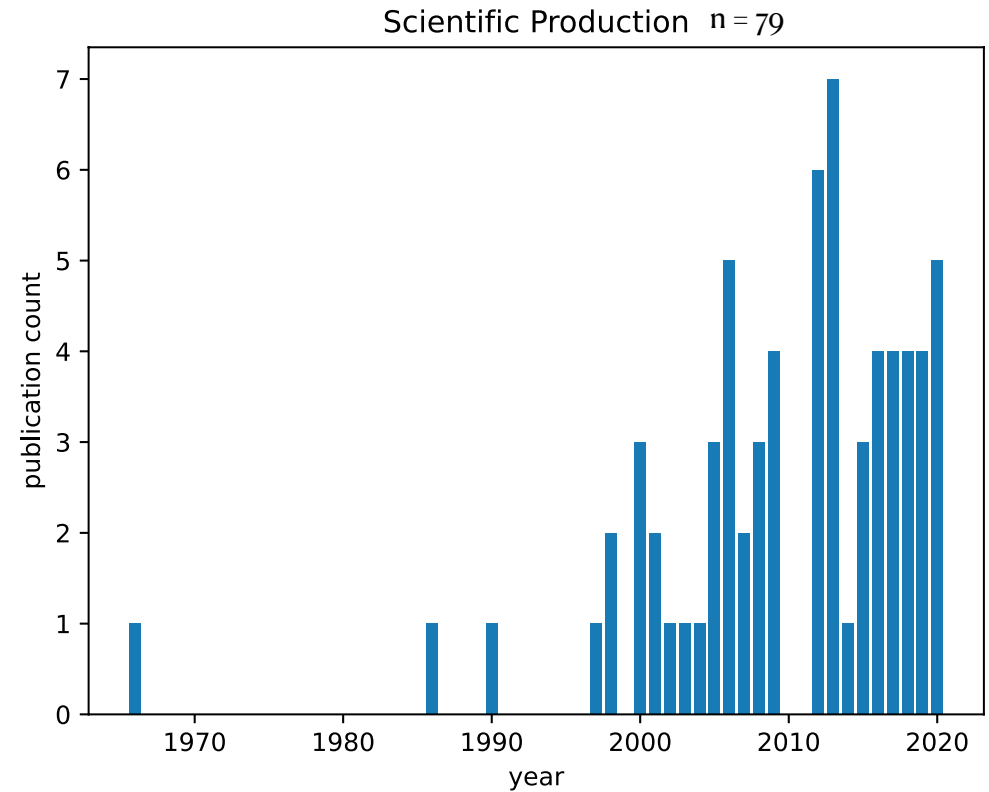




Results

Bibliometric Analysis

- Field is increasing
- Most contributions from U.S. researchers, followed by Sweden
- Significant contribution of health related research fields





Results

Bibliometric Analysis

- **study focus**

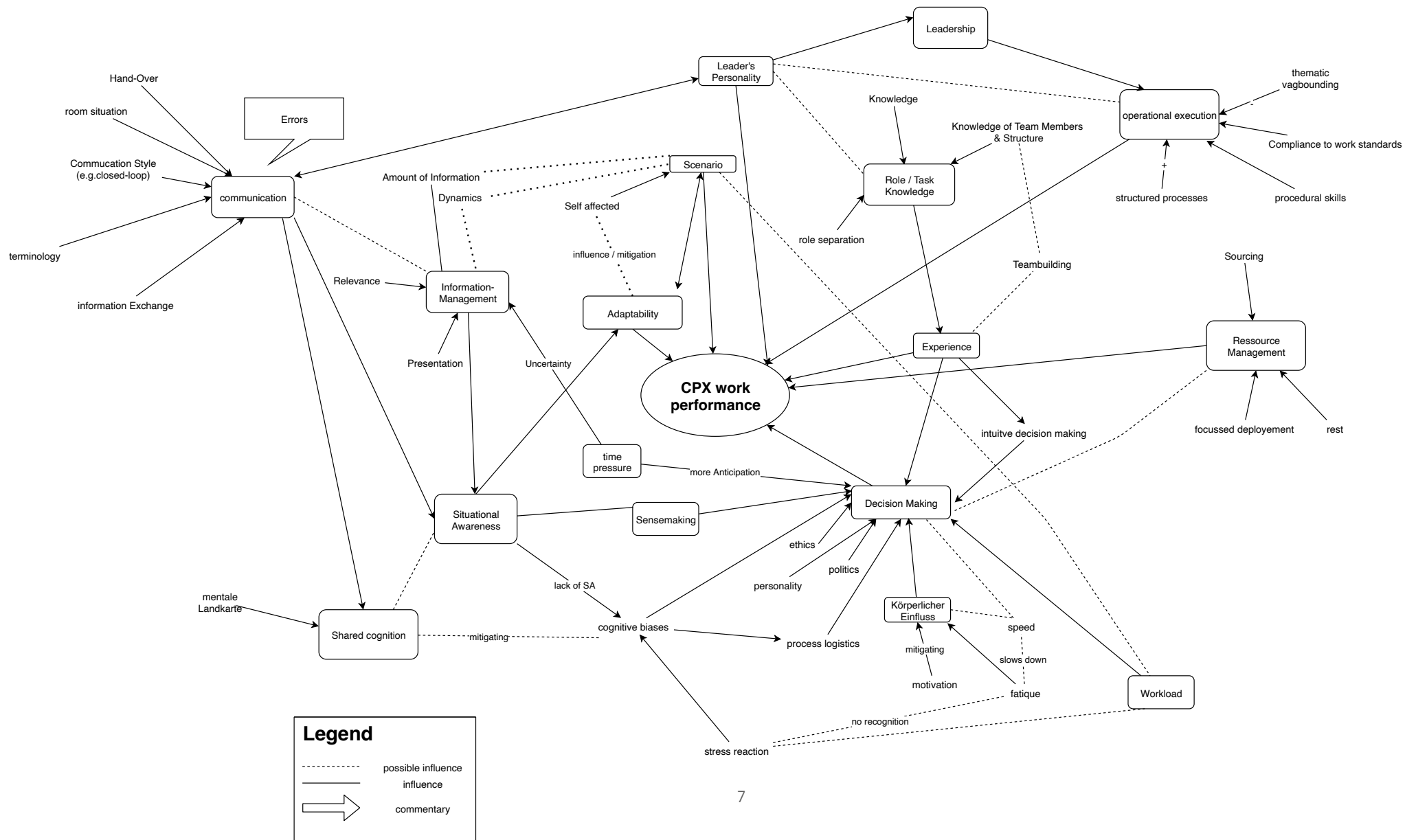
- method development (n=25)
- team processes (n=13)
- training interventions (n=9)

- **study method**

- experimental studies (n=33)
- literature reviews (n=11)
- observational studies (n=10)

- **study population**

- emergency management personnel (n=35)
- military personnel (n=27)
- public health (n=6)
- students (n=7)



Results

Factors influencing command post's performance

- Scenario (which the command post has to deal with)
- Resilience (of command post structures, equipment, and members)
- Situational awareness
- Decision-making
- Team Structures and Teamwork
- Operational Execution

Factors are partly interconnected — further investigations necessary!

Next steps

- (1) **Interview study**
with experienced trainers and experts in command post work
- (2) **KPI modelling**
- (3) **Observational study of Command Post exercises (CPX)**
KPI validation and refinement
- (4) Development of **measurement methods**
- (5) **KPI measurement**
in command post exercises (CPX)

Thank you
for your attention

Any questions?

